



## Windows SharePoint Services v3.0 Planning & Installation European Microsoft SharePoint Conference 2007

Brett Lonsdale – Combined Knowledge  
February 12th to 14th, 2007  
Convention Center  
Hotel Estrel, Berlin, Germany



# An Introduction to:



- UK Based SharePoint Training Provider
- Microsoft Gold Partner
- Mindsharp's UK Partner
- Established in 2003 by three partner:
  - Brett Lonsdale (MCSD, MCT)
  - Craig Carpenter (MCSE, MCT)
  - Steve Smith (MVP, MCSE, MCT)
- We Provide:
  - Technical Developer, Administrator, Power User, and End User courses.
  - Courseware throughout Europe to European organisations wishing to use our course materials.
  - SharePoint Consultancy

# The Customer:

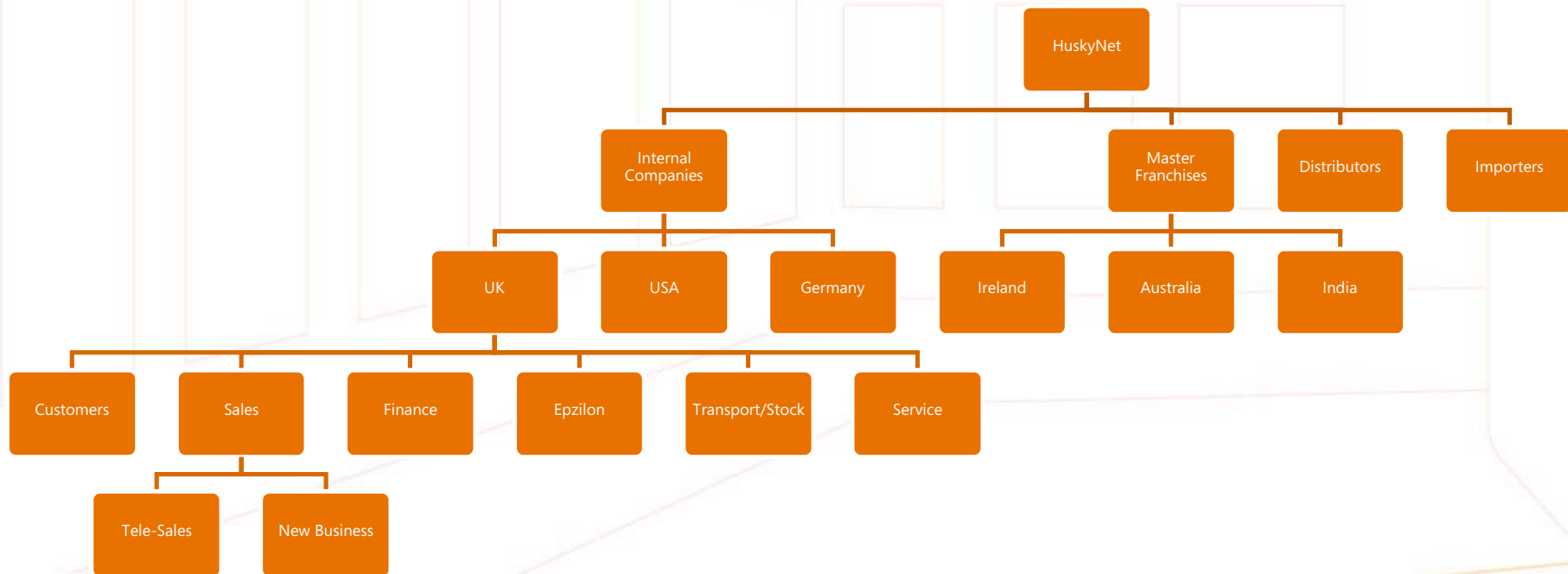


- Husky Group Limited
- Based in UK with offices and manufacturing in China, India, Australia, United States, South Africa, and Germany
- Manufacture & Sell Refrigerators to Corporate Brands, Shops, Clubs and the Domestic Market
- Expanded rapidly from just having a UK base three years ago.
- Combined Knowledge provided the tools to bring Customers, Importers, Distributors and Husky Employees together.

# The Solution

- Microsoft Windows Server 2003 x 3
- ISA Server
- Exchange Server
- IIS 6.0
- Microsoft Navision Attain
- Microsoft SQL Server 2000
- Windows XP Desktops
- Office 2003 clients
- Windows SharePoint Services V3.0

# WSS v3.0 Site Collection Example



# Providing Collaboration Globally

- Husky Employees can access Navision Data from any browser using WSS v3.0 and custom Web Parts, as well as collaborate with Teams worldwide.
- Importers and Distributors can access Technical Data, Contact Information, Husky Corporate News, New Product Designs
- Brands (Stella, Budweiser) can access New Product Designs, and approve them using custom workflows.
- Satellite Offices can collaborate and Share Documents more easily.

# Project Approach

- I followed the Microsoft Solution Framework model to find a solution for Husky Group's needs.
- Husky originally requested a custom solution for warehouse and Transport management, Stock Control, Relationship Management, Reporting, and Human Resources Management.
- After working in each department, Interviewing users, and Managers
- Microsoft Navision and WSS v3.0 with some customisation provided a solution for there requirements.
- Navision didn't work well as a Global Tool.
- Windows SharePoint Services was the obvious choice to provide reach.

# Do's and Don'ts

- Navision was deployed too quickly.
- The Customer had to have the new solution by the 1<sup>st</sup> January.
- Within 8 weeks Navision was installed and Live containing all of the data from Sage Line 50, and ACT.
- Stock control suffered for a while whilst teething problems were addressed.
- Bandwidth is also a problem with Navision. The data access was too slow for remote users.
- The same pressure was applied by the customer to have SharePoint installed. We resisted the pressure and insisted it was planned properly.

# The Outcome

- Distributors, Importers, Customers, and Staff have a global collaboration tool.
- Training was provided to all users on WSS using Combined Knowledge materials.
- Technical Training was provided to the IT Manager at Husky UK.

# Questions and Answers

Brett Lonsdale – Combined Knowledge

# Sweepstake

Complete your Feedback form  
and have a chance  
to win a Zune!\*



\* English US version